



**O
W
N
E
R
S**

**M
A
N
U
A
L**

PTR

**Roller-Delayed BlowBack
Weapon Systems**
"MODELS: 9C; 9CT; 9KT; and 9R"



PTR



101 8130 6504741111; SQ31, 66 3511

PH: (43) 3 32- 2 22 110 (43) 3 32
-2 225 @HD: 222 525 -@PTRP



READ THIS FIRST

Warning! It is your responsibility to assure that your firearm is handled, fired, and stored safely and responsibly at all times.

This manual provides instructions on the operation and maintenance of your PTR firearm. Read and understand it carefully before you try and use your firearm. Your safety, and that of those around you, depends on your knowledge of your firearm and on your knowledge of safety rules common to all firearms. Please study the common-sense safety rules noted in this manual. Your first responsibility as a gun owner is always safety!

NOTICE!

PTR Industries has no control over the use of your firearm, and shall not be responsible for injury, death, or damage to property resulting from either intentional, or accidental, discharge of this firearm. In addition PTR shall not be responsible for proper function of the firearm when it is used for purposes, or subjected to treatment, for which it was not intended. PTR will not honor claims which may result from careless or improper handling, unauthorized adjustments, or parts replacement, corrosion, neglect, use of the wrong type or caliber of ammunition, or the use of ammunition other than original, high quality, commercially manufactured ammunition in good condition, or any combination thereof.

SAFETY FIRST! IT'S YOUR RESPONSIBILITY!

- Treat every gun as if it is loaded... AT ALL TIMES!
- Always keep the muzzle pointed in a safe direction.
- Keep your finger off the trigger and out of the trigger guard until you are ready to shoot.
- Always leave your selector in the "SAFE" position until you are ready to fire.
- Always keep your firearm unloaded when not in use.
- Be sure of your target and everything beyond it.
- ALWAYS WEAR HEARING AND EYE PROTECTION WHEN SHOOTING.
- Use only clean, high quality, factory loaded ammunition in good condition. Do not use hand loaded or reloaded ammunition.
- Be sure that your barrel is clear of any obstructions prior to firing.
- Do not alter or modify your firearm.
- Do not change your firearm's trigger pull. Alterations of trigger pull can affect engagement settings and may cause an accidental misfire.
- Store your firearm and ammunition separately, under lock and key, and out of the reach of children.
- Practice all general safety and etiquette guidelines when using a firearm.

NOTE! THIS MANUAL COVERS NUMEROUS MODELS AND/OR CALIBERS OF PTR FIREARMS. THE TEXT, PICTURES AND EXPLODED VIEWS DO NOT NECESSARILY DEPICT ALL VARIATIONS. CONTACT US FOR INFORMATION ON PARTS THAT ARE UNIQUE TO YOUR MODEL.

TABLE OF CONTENTS

.....

Owner Essentials.....	1
PTR Specifications and Measurements.....	3
Break-In Procedures	4
Ammunition Notes/Recommendations	5
Bolt Gap Specifications, Measurements and Maintenance.....	5-6
General Maintenance.....	6
General Operation	6
Disassembly Procedures	7
Bolt Carrier Reassembly Procedures	8
Firearm Reassembly Procedures	8
Use of Your PTR Firearm.....	9
Use of the Rear Sight.....	10
Frequently Asked Questions	12
Warranty, Service & Return Information	13
Warranty Form	14
PTR Firearm Exploded View/Parts List	15-20

This manual address the PTR “Models: 9C; 9CT; 9KT; and 9R” products. These products are manufactured in the United States using engineering drawings, specifications, and fixturing, further developed refined by PTR base on our years of experience producing G3 style rifles, thus enabling us to produce the most true to original design line of US made roller delay weapons on the market today.

PTR SPECIFICATIONS, MEASUREMENTS AND MAINTENANCE

CALIBER: **MODEL 9C and 9CT - 9x 19mm**
 Magazine: 30 Rd Box
 Operating Principle: "Roller-Delayed BlowBack"
 Action: Semiautomatic
 Pistol overall length: 17.6 inches
 Weight: 5.1 lbs
 Sights: Front hooded post, rear rotary drum sight with adjustments for windage and elevation. User can select between 4 aperture sizes on the drum, with the smallest utilized for greater accuracy and the largest for improved light and situational awareness

CALIBER: **MODEL 9KT- 9x 19mm**
 Magazine: 30 Rd Box
 Operating Principle: "Roller-Delayed BlowBack"
 Action: Semiautomatic
 Pistol overall length: 13.38 inches
 Weight: 4.81 lbs
 Sights: Front hooded post, rear rotary drum sight with adjustments for windage and elevation. User can select between 4 notch aperture sizes on the drum, with the smallest utilized for greater accuracy and the largest for improved light and situational awareness. Butt cap with QD sling mount and mountable 1913 rail for quick brace/stock attachment.

CALIBER: **MODEL 9R 9x19mm**
 Magazine: 30 Rd Box or as required by state law
 Operating Principle: "Roller-Delayed BlowBack"
 Action: Semiautomatic
 Rifle overall length: 34.5 inches
 Weight: 6.31 lbs.
 Sights: Front hooded post, rear rotary drum sight with adjustments for windage and elevation. User can select between 4 aperture sizes on the drum, with the smallest utilized for greater accuracy and the largest for improved light and situational awareness

Each PTR firearm is shipped with the following:

- Owner’s manual
- Warranty Card
- Trigger lock or Cablelock

INITIAL CLEANING AND BREAK IN

Make sure to thoroughly clean your product prior to firing. Because there are so many options in cleaning accessories and methods, we leave the specifics of this process to you. However, after cleaning, but before firing, lightly oil all the internal parts (bolt head, bolt carrier, locking piece), while keeping the barrel and chamber dry. PTR weapons are made to tighter tolerances than most other weapons of similar design, so a break-in period of 200-300 rounds is highly recommended. This will allow machined surfaces to smooth out, in turn smoothing out the action of your new weapon. This break-in period will also ensure that you achieve optimum accuracy and barrel life.

BREAK IN PROCEDURES:

- I. Fire 10 single shots. After each shot, push a cotton patch, wet with solvent through the bore. Then wet a bronze brush with solvent and stroke the barrel five to ten times. Follow with another wet patch and then enough dry patches to completely remove any solvents and/or wetness from the barrel.
- II. Fire 10-20 shots, clean as above after each round of firing. Repeat step 2 until you have reached the suggested 200-300 rounds.

During this break-in period you may experience the following:

Intermittent occurrences of failure to feed, or failure to eject. If you are experiencing any failure issues after you have completed the suggested break in of your new PTR product, or if malfunctioning is excessively frequent during the break-in period: stop shooting your PTR, make sure it is unloaded, store it properly, and contact PTR customer service for support.

- **Failure to feed**– This is when your product does not properly seat the round in the chamber prior to firing.
- **Failure to eject**– This is when your product does not eject the spent casing from the chamber after firing.

AMMUNITION

PTR sells weapons chambered in various calibers. It is vital that you understand your weapons cartridge nomenclature and only fire cartridges for which your purchased weapon was designed. To assist you, the name of the appropriate cartridge will be stamped on the receiver. If you have any questions regarding the appropriate caliber cartridge for your product please contact PTR prior to firing!

Please remember, PTR recommends the use of original, high quality commercially manufactured ammunition in good condition. PTR will not honor claims which may result from careless or improper handling, unauthorized adjustments, unauthorized parts replacement, corrosion, neglect, or the use of the wrong type or caliber of ammunition. Due to the nature of the roller delayed blowback, operating system, specifically the extraction process and its resulting damage to the casing, we do not recommend you reload any cartridge fired from a PTR product.

NOTE: Some types/brands of ammunition have unique characteristics that reduce reliability in semi-automatic firearms. PTR strongly recommends that you purchase and test a small quantity of any type of ammunition in your firearm prior to purchasing any particular item in large quantities.

BOLT GAP SPECIFICATION, MEASUREMENT AND MAINTENANCE

The Bolt Gap is a very important aspect of any PTR weapon that needs to be carefully inspected and monitored to ensure a long lifetime for your firearm, as well as its safe and reliable functioning. Bolt gap is the distance measured between the rear bottom of the bolt head and the front of the bolt carrier, when the two are fully collapsed towards each other. This space or "gap" can be measured with a set of feeler gauges which can be purchased at any home improvement or automotive shop.

Safe, reliable, and acceptable bolt gap measurements for ALL PTR products after break-in will fall between .010"- .018" (.254 mm- .457mm).

The following instructions will tell you how to measure your bolt gap:

- I. Follow the break-in instructions for your firearm.
- II. Move your selector to the "SAFE" position. Remove your magazine and ensure the chamber is clear, and that the firearm is safe.
- III. Disassemble your firearm and thoroughly clean the internal components, specifically the bolt head, bolt carrier, trunnion, barrel face, and locking piece. Once this has been done, reassemble your firearm.
- IV. Charge your firearm by pulling the charging handle rearward and locking it into the recessed slot of the cocking tube. Once this has been done you can "slap" down on the handle, which will send the carrier and charging handle forward very quickly. Do not attempt to slow the charging handle as it rides forward, this will disrupt the measurement process. Pull the trigger or "dry fire".

- V. Repeat the "charging" process explained in step IV about 5 or 6 times, each time pulling the trigger, or "dry firing".
- VI. With the firearm in the charged position and having pulled the trigger, look into the magazine well. Through the empty window of the magazine well, you will be able to see where the carrier and bolt head meet. The gap between the two is the area to measure. Insert your feeler gauge to determine the measurement. The appropriate gauge will fit somewhat tightly into the gap.

If your bolt gap measurement is below .010" after the initial break in of your weapon please contact PTR customer service for support.

Over the lifetime of use of your PTR firearm the bolt gap should remain at or around the same measurement taken after break in. If your bolt gap drops drastically over the lifetime of your firearm, please contact PTR customer service for support.

GENERAL MAINTENANCE

This firearm is rugged, well constructed and, when properly used and maintained, reliable. It is nonetheless a mechanical device and, as such, there is the potential for malfunction. As a firearm, it can be very dangerous if misused or operated improperly. Accordingly, it is wise to exercise due care and caution before operating.

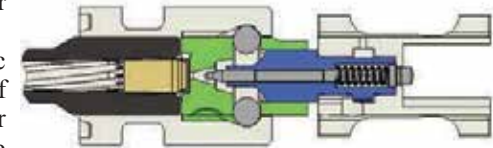
PTR suggests that the purchaser clean the firearm after each use. This will help ensure a lifetime of safe, reliable, and enjoyable shooting.

When your firearm is not in service it should be stored in a cool, dry, and safe location. It should be secured from unauthorized persons (especially children) under lock and key.

GENERAL OPERATION

PTR weapons systems operate on a roller delayed blowback, principle, one of the safest and most reliable semiautomatic actions currently in use. With this style of action, the bolt group travels in a linear fashion from front to rear, riding on the recoil rod/spring assembly.

The bolt head itself has two locking rollers on its sides. While this action is "in battery," the bolt group is held in place inside the trunnion via the bolt head locking rollers. When the action is fired, the thrust from the cartridge case pushes the bolt rearward slightly, however the bolt group is initially held in place by the bolt head locking rollers. When the excess pressure from the fired round's gases escapes through the flutes machined in the chamber and the gas pressure drops to a safe limit, the bolt head rollers will unlock and allow the bolt group to cycle rearward. As the action is cycling rearward, it extracts and ejects the spent casing through the ejection port. When the bolt group travels as far back along the recoil rod as it can, it hits a mechanical buffer and is then propelled forward along the recoil rod by the force of the recoil spring. As the bolt group is coming forward it will strip and chamber the next round and put the firearm "in battery" once again.



DISASSEMBLY PROCEDURES – FIELD STRIPPING YOUR PTR

1. Before beginning disassembly, set the selector on "S" or "SAFE" and then remove the magazine; then check the weapon to make sure it is unloaded then remove all slings, scopes and scope mounts.



2. To inspect the weapon, point muzzle in a safe direction then, unfold the cocking handle located on the left side of the weapon at the front of the handguard and pull the cocking handle towards you (rearward); then rotate the handle upward into the retaining notch located near the rear of the cocking tube. Once the chamber is inspected and is clear, pull the cocking handle slightly rearward and rotate it downward out of the retaining notch; then release the handle to

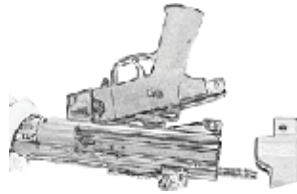


allow it to return to its forward most position. Then, still pointing the muzzle in a safe direction, rotate the selector lever to "F" or "FIRE" and depress the trigger to allow the bolt to return to its closed or fired position. Rotate the selector lever back to "S" or "SAFE" before proceeding.

3. Remove the one takedown pin located just forward of the end cap. No tools should be required to push the pin through from the right to left side of the firearm.



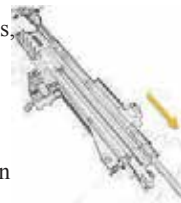
4. The end cap and recoil spring assembly should now be easily removed by pulling the end cap straight back to the rear. The entire end cap and recoil spring assembly will come off as one unit.



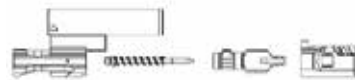
5. With the end cap assembly removed, you can now remove the entire trigger group by pulling downward on the pistol grip.



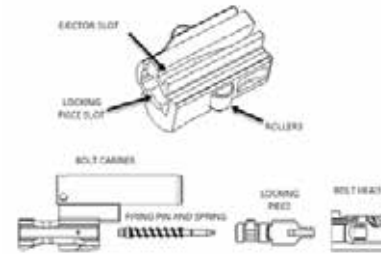
6. The bolt carrier should slide easily out of the rear of the receiver by merely tipping the muzzle upwards, unfolding the cocking handle and then pulling it rearward. This action should put the bolt carrier into position for you to grasp it and remove it from the receiver.



7. To take apart the bolt head/carrier assembly, first turn the bolt head one half turn counterclockwise and pull it forward off of the bolt carrier. Then push in and slowly rotate the locking piece counterclockwise until its lug clears the bolt carrier. You can now remove the locking piece, firing pin, and firing pin spring from the bolt carrier. No further disassembly of the firearm is either necessary or recommended beyond this point. Any repair or maintenance procedure that requires further disassembly of the weapon should be referred to a qualified gunsmith.



BOLT CARRIER REASSEMBLY PROCEDURE



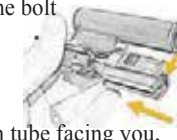
1. Insert the firing pin, firing pin spring, and locking piece into the bolt head carrier with the slot on the top of the locking piece facing the 3 O'Clock position. Depress the locking piece into the carrier and turn it to the 10 O'Clock position counter clockwise.



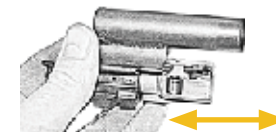
2. Insert the bolt head onto the locking piece, making sure the flat top of the bolt head is at the top so the roller pin engages the slot on the locking piece. Turn the bolt head slightly counter clockwise until the angled relief cut at the base of the bolt head is aligned with the bolt carrier.



3. With bolt carrier extension tube facing you, rotate the bolt so that the rollers are now at the 3 & 6 O'Clock position and you hear or feel the click of the locking piece spring locking the rotation of the bolt head.

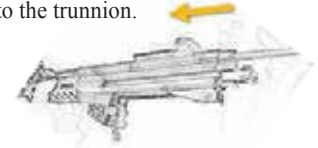


4. The bolt head should now slide forward and back along the locking piece. At this point the bolt carrier is ready to be installed.



WEAPON REASSEMBLY PROCEDURE

1. Grasp the receiver and make certain that the cocking handle is in its forward most position. Then insert the complete bolt carrier assembly and recoil spring assembly into the rear of the receiver, inserting it as far as possible. Once the bolt carrier assembly is inserted into the rear of the receiver, point the muzzle of the weapon at the ground and it will seat itself into the trunnion.



Reinstall the trigger group by first inserting the front of the trigger group over the rear of the magazine well, then rolling the rear end with the pistol grip into position.



3. Slide the butt stock/cap recoil spring assembly back into place over the rear of the receiver, with the recoil spring properly positioned in its recess in the bolt carrier.



4. Insert the takedown pin into the end cap hole from the left side to the right side of the receiver. The weapon is now fully assembled.



5. Re-attach all slings, scopes, and scope mounts.

1. Before using your PTR weapon, make sure that there is not a magazine in the magwell and no round is in the chamber, and put the safety selector lever in the "S" or "SAFE" position. The safety selector lever is easily manipulated by the thumb of your right hand if you are right handed or by the thumb or pointer finger of your left hand if you are left handed.



2. To load the magazine, hold the magazine in either hand and use your other hand to place the first round on top of the magazine follower making sure that the bullet end of the round is pointed toward the front of the magazine. Apply downward pressure on the round with your thumb to fully seat the round in the magazine. Load additional rounds in the magazine, up to the magazine's total capacity, following the same procedure you used to load the first round.

3. Check again to ensure that the safety selector lever is in the "S" or "SAFE" position. Point the weapon in a safe direction. At this point you may now open the action by first rotating the charging handle outward, then pulling the charging handle in a rearward direction. Once you have pulled the charging handle as far rearward as possible, rotate it upward and engage it into the cocking handle notch located at the rear of the cocking tube.



4. Now insert the magazine in the magazine well. To insert the magazine, start by holding the weapon in one hand and the magazine in your other. Insert the magazine (making sure that the bullet end of the rounds are facing toward the front of the firearm) into the magazine well front end first with a slight bottom-forward cant, then roll the rear of the magazine up into place. When the magazine engages the magazine catch and seats itself, a distinctive "click" will be heard. At this point the magazine is fully installed. To remove the magazine for any reason, first place the safety selector lever in the "S" or "SAFE" position and then depress the magazine release located at the back of the magazine well on the right hand side of the weapon and remove the magazine by pulling it downward while rotating the rear of it toward the front of the firearm.

5. With the magazine properly inserted in the magazine well and with the weapon pointed in a safe direction you may now charge the firearm by rotating the charging handle downward out of the charging handle notch on the cocking tube and releasing it. This will allow the bolt carrier to travel forward by the tension of the recoil spring, chambering a round, and putting the weapon into battery. The weapon is now "cocked" or ready to fire. Keep the firearm pointed in a safe direction and keep the safety selector lever in the "S" or "SAFE" position until you are ready to fire.



***Do not touch the charging handle as it travels forward into battery once you release it. Doing so will hinder proper chambering of a round.**

6. With the weapon's muzzle pointed downrange, raise the firearm to a shooting position, then acquire/choose your sight picture. Do not place your hand on or under the magazine. Once you have acquired/chosen your sight picture, place the safety selector lever in the "F" or "FIRE" position, place your pointer finger on the trigger and squeeze. Successive shots do not require "cocking" the weapon; they will cycle semi-automatically until the magazine is empty. When you are done firing, place the safety selector lever in the "S" or "SAFE" position.

***Caution:** Never point or aim your weapon in a direction that is unsafe to shoot, or at an object or surface that may cause the bullet to ricochet.

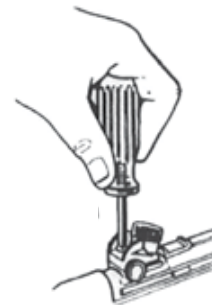
NOTE: When the last round is fired, the bolt carrier assembly will remain "in battery" (closed position).

NOTE: To adjust the windage or elevation of the weapon's sights, please refer to the "Use of the Rear Sight" section.

USE OF THE REAR SIGHT

Windage Adjustment:

- A. Check the rear sight lock screw (located behind the rear sight drum) for tightness using the sight adjustment Phillips screwdriver.
- B. Decide which direction you need to move the rear sight. The general rule of thumb is that you always move the rear sight in the direction you wish the projectiles to move on the target downrange.
- C. Use the screwdriver tool to remove the slack (free rotation) from the windage adjustment screw in the direction you intend to move the rear sight BEFORE loosening the rear sight locking screw. The rear sight adjustment screw is located on the right side of the rear sight assembly.
- D. Rotate the rear sight locking screw, using the Phillips screwdriver, one complete turn counterclockwise to loosen.
- E. Rotate the rear sight adjustment screw in the desired direction.
- F. Retighten the rear sight locking screw.
- G. Shoot a group and repeat steps B-F as necessary.



Direction of Windage Adjustment - Viewing the rear sight assembly from the right hand side, rotate the rear sight adjustment screw using the Phillips screwdriver, as follows.

COUNTERCLOCKWISE moves impact RIGHT

CLOCKWISE moves impact LEFT

Adjustment: 1 complete revolution = 2.16" at 27.5 yards (25 meters)

1. Elevation Adjustment:

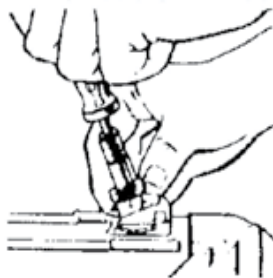
The rear sight has four different apertures sizes allowing the shooter to adjust the sight to his/her shooting style. These apertures “do not” change the point of impact of the round down range when the turret is rotated between sizes. Changing the elevation of the drum is accomplished with the supplied sight adjustment tool found in the carrying case. The sight adjustment tool consists of two separate parts, a Phillips head screwdriver and cylindrical pliers. The cylindrical pliers can be stored on the top of the Phillips head screwdriver and is comprised of two spring actuated fingers.

To adjust the elevation:

- A. Insert the cylindrical pliers into the rear sight drum with the two spring actuated fingers projecting into the two slots, located on the inside of the rear sight drum that have the spring detents in them. (Note: There are four slots, but only two with spring detents.) Do not allow the cylindrical pliers tool to rock back and forth inside the rear sight cylinder during your adjustment. It must remain immobile.
- B. Holding cylindrical pliers in place, slowly and carefully insert the Phillips head screwdriver into the top of the cylinder until it is fully inside. At this point the fingers in the cylinder should be depressed inward and should be compressing the spring detents in the rear sight drum.
- C. Holding the sight adjustment tool in place you should be able to easily rotate the rear sight drum independently of the rest of the sight assembly and the sight adjustment tool. If at any point the cylindrical pliers rotate with the rear sight cylinder as it is turned or the rear sight cylinder cannot be rotated, remove just the Phillips head screwdriver from the lever cylinder and start again at step B above.
- D. Once the rear sight cylinder is free to rotate independently, each movement of the drum is changing the elevation adjustment of the rear sight. Once the elevation adjustment is made and the sight adjustment tool is removed from the rear sight, the spring detents will snap back into place as the shooter selects his/her preferred aperture.

Direction of Elevation Adjustment - Rotating the rear sight drum clockwise as viewed from the top of the weapon moves the impact of the projectiles down on target. Counterclockwise rotation moves the impact of the projectiles up on target.

Clockwise= Down
Counterclockwise= Up



Elevation Adjustment Value - One full revolution of the PTR9 rear sight drum moves the impact of the projectile on target approximately 2.25 inches (56 mm) at a range of 27.5 yards (25 meters).

1 complete revolution= 2.25"
at 27.5 yards (25 meters)

F.A.Q: FREQUENTLY ASKED QUESTIONS

1. *What is the normal break-in period for a PTR?*
Normal break-in requires a minimum of 150-200 rounds.
2. *What calibers are PTRs chambered for?*
PTR9 Series: 9x19mm cal.
3. *What is the rate of twist in a PTR barrel?*
1:10
4. *What ammo is recommended for a PTR?*
PTR recommends the use of Commercial Brass or Steel Cased, factory loaded ammo.
5. *What is the pull weight of a PTR trigger?*
Standard Pistol is : 8-10 lbs.
6. *What is the acceptable operating range for bolt gap on a PTR?*
The acceptable bolt gap range for the majority of the life of the firearm is .010”-.018” after the break in period is completed. PTR firearms can be expected to maintain this range for several thousand rounds, after which the gap can be expected to lower. Safe operating range is .004”.
7. *What is a PTR constructed from?*
Receiver: Stamped from 1018 sheet steel.
Barrel: 4150 Chrome Alloy steel, with an nitride coating on all pistol variants
Handguard: Milled Aircraft grade aluminum or molded polymer depending on model.
Stock: Milled Aircraft grade aluminum or molded polymer depending on model.
Pistol Grip: Molded polymer, style depending on model.
8. *What HK handguards and stocks will fit a PTR?*
PDW PTR9C & PTR9CT 9K and 9R's: will accept most HK , and after-market components produced for HK MP5 and HK94 series of weapons



LIFETIME LIMITED WARRANTY

All new PTR Industries, Inc. (PTR) Firearms (Product) are warranted to the original product purchaser (Purchaser) for the lifetime of the product, provided they are properly registered and maintained IAW the Operators manual.

This limited lifetime warranty applies only if the Product was: a) purchased from an Authorized PTR Dealer in the United States; b) Properly registered by the warranty card being completed and returned to PTR, as required; and c) properly maintained IAW the Operators manual.

1. What is Covered?

PTR will, in its sole discretion, repair or replace any Product that fails, due to a defect in materials or workmanship. All warranty covered repairs are Free of Charge (FOC).

2. How to Obtain Service

Contact PTR for a Return Material Authorization (RMA) Number before returning any Product at: PTR Industries, Inc./ 101 Cool Springs Drive / Aynor, SC 29511/ Tel: 843-358-2222 x300 / Fax: 843-358-2223

Once a valid RMA has been issued, you will be given specific instruction on how to return the Product.

Caution: DO NOT send any live ammunition with the firearm. Further, no shipment(s) will be accepted without a valid RMA and no C.O.D. shipments will be accepted

3. What Is Not Covered?

This warranty does not cover defects or damage due to: (1) Unreasonable use; (2) Failure to properly maintain; (3) Failure to comply with instructions in the owner's manual including Cleaning and Break In; (4) Improper installation of original PTR parts; (5) Installation of non PTR parts; and (6) Rust, Corrosion, or Obstructions in the barrel.

PTR reserves the right to determine what constitutes unreasonable use of the Product. All wooden parts and all accessories are excluded from warranty coverage.

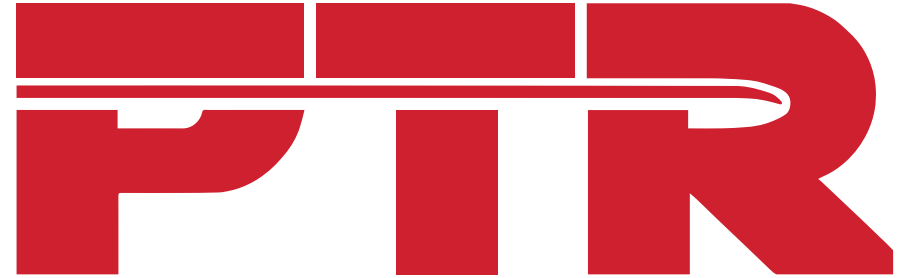
ANY UNAUTHORIZED ALTERATION OR MODIFICATION OF THE PRODUCT OR USE OF PARTS OR COMPONENTS NOT ORIGINALLY MADE BY PTR SHALL VOID THIS WARRANTY. PTR SHALL NOT BE RESPONSIBLE FOR ANY CLAIMS INVOLVING THE PRODUCT THAT RESULT FROM THE USE OF FAULTY, NONSTANDARD, REMANUFACTURED, OR RELOADED AMMUNITION OR AMMUNITION NOT MANUFACTURED TO NATO AND/OR SAAMISPECIFICATIONS.

UNDER NO CIRCUMSTANCES SHALL PTR BE LIABLE FOR CONSEQUENTIAL, INCIDENTAL OR SPECIAL DAMAGES OF ANY KIND, AS A RESULT OF BREACH OF: THIS, OR ANY EXPRESS OR IMPLIED WARRANTY; NEGLIGENCE; OR OTHERWISE.

PRODUCT PURCHASED BY LAW ENFORCEMENT, MILITARY, AND SIMILAR ORGANIZATIONS, FOR DUTY ISSUE TO THEIR PERSONNEL, ARE EXCLUDED HEREFROM AND ARE COVERED BY A LIMITED ONE-YEAR WARRANTY, AS ARE COMMERCIAL USE PURCHASERS.

THIS WARRANTY GIVES YOU SPECIFIC LEGAL RIGHTS, AND YOU MAY HAVE OTHER RIGHTS, WHICH VARY FROM STATE TO STATE. THIS LIMITED WARRANTY IS THE ONLY EXPRESS WARRANTY BY PTR.

This warranty applies only to the repair or replacement of the Product and only when the Product is properly handled and maintained according to the manufacturer's instructions. Purchaser must notify PTR within thirty (30) days of noticing a defect. PTR reserves the right to change the warranty period without notice and without incurring obligation expressly disclaims all warranties not stated in this limited warranty. For a full list of requirements necessary to process a warranty claim please contact PTR customer support (843) 358-2222 x300 or send an email to Info@PTR-US.com and a sales representative will contact you promptly.

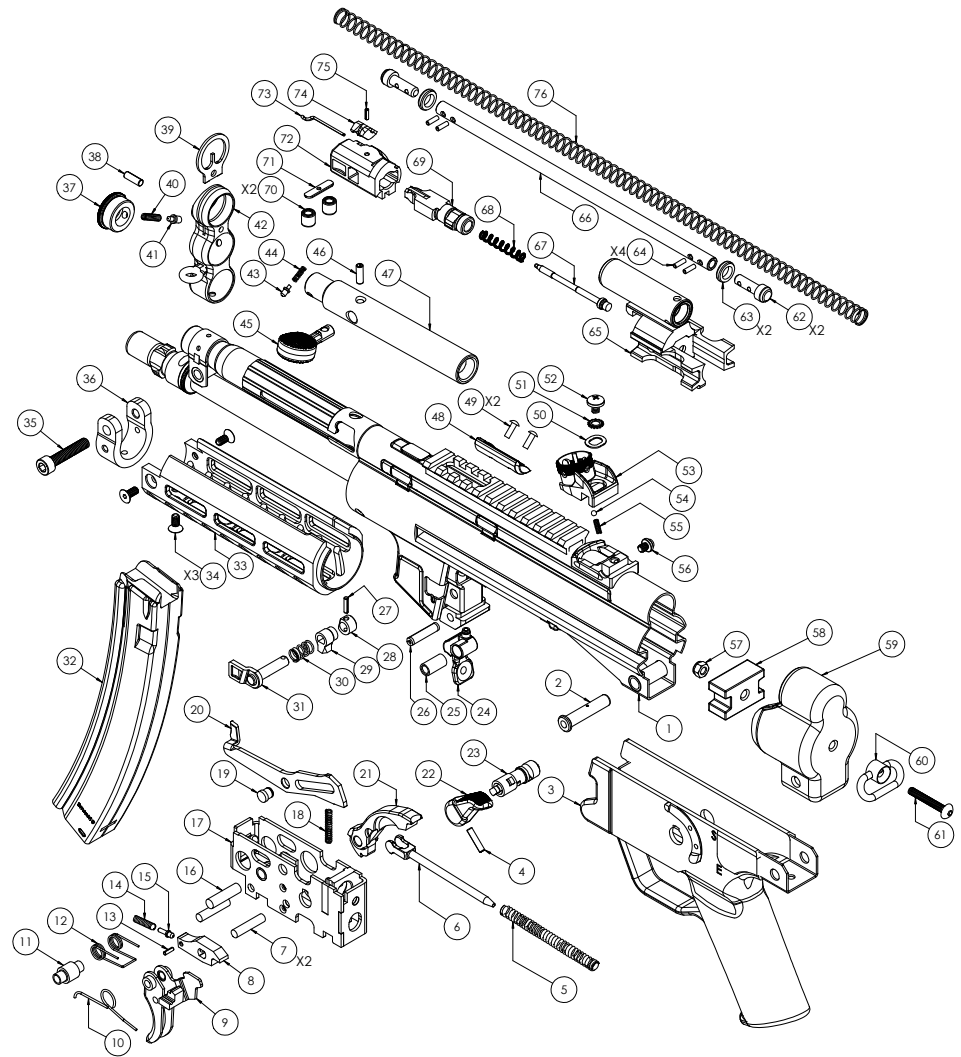


**To register the
warranty on
your weapon
please visit**

www.PTR-US.com

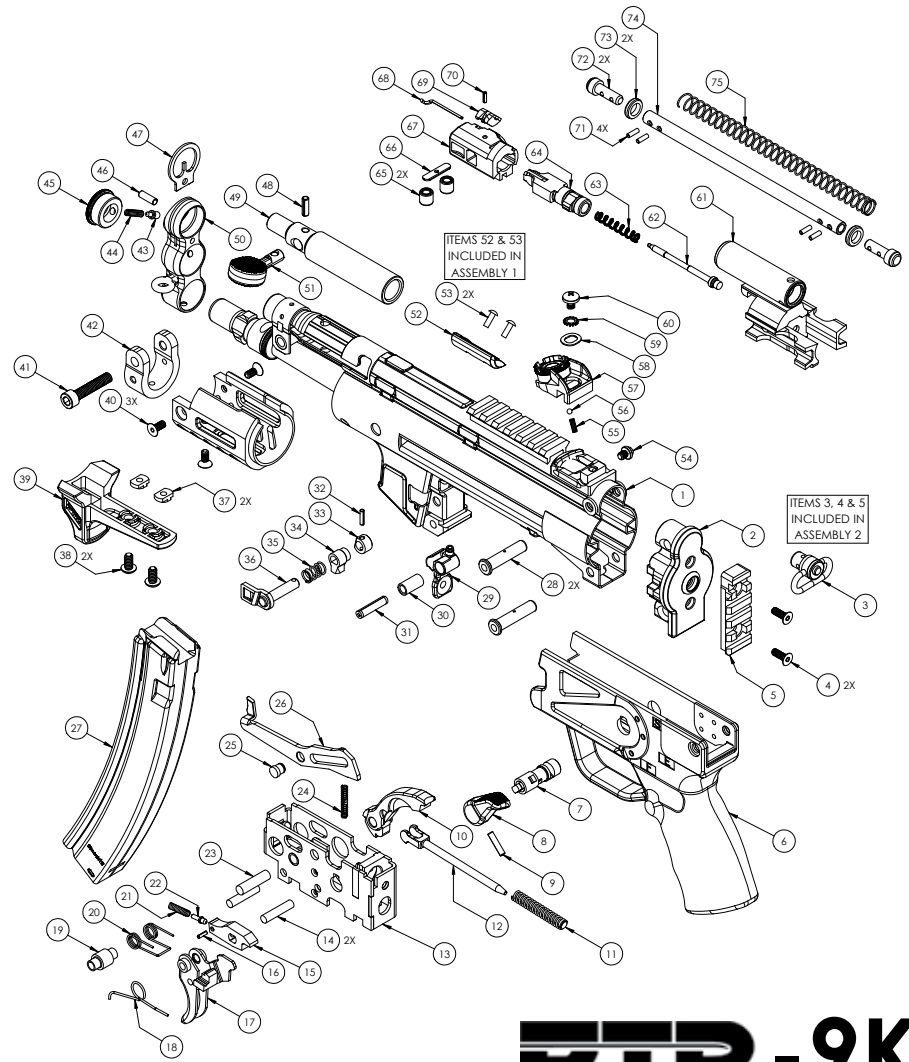
ITEM	PART NUMBER	DESCRIPTION	QTY.
1	PDW-031182	RECIEVER ASSY, 9C	1
2	PDW-001402	STOCK RETAINING PIN, 35.3MM	1
3	PDW-030320	PISTOL GRIP, 9C	1
4	HW-000205	PIN, COIL, 3MM x 15MM	1
5	PDW-000364	SPRING, HAMMER, 9MM	1
6	AC-000363	PRESSURE FORK	1
7	AC-000340	PIN, TRIGGER & BUSHING	2
8	AC-000356	SEAR	1
9	AC-010345	TRIGGER ASSY	1
10	AC-000341	SPRING, TRIGGER	1
11	AC-000377	BUSHING, SEAR SPRING	1
12	PDW-000380	SPRING, ELBOW	1
13	AC-001356	CLAMPING SLEEVE, Ø2 X 6.8	1
14	AC-000358	SPRING, SEAR	1
15	AC-000357	TRIGGER BOLT	1
16	AC-000361	PIN, HAMMER	1
17	AC-011386	TRIGGER BOX	1
18	AC-000337	SPRING, EJECTOR	1
19	AC-000335	EJECTOR PIVOT	1
20	PDW-000339	EJECTOR LEVER, 9MM	1
21	AC-000362	HAMMER	1
22	PDW-012317	SAFETY SELECTOR	1
23	AC-000315	SAFETY SHAFT	1
24	AC-010131	MAG RELEASE LEVER	1
25	AC-002131	BUSHING, MAG RELEASE	1
26	HW-000227	PIN, SPRING COIL, 5MM x 22MM	1
27	AC-000124	CLAMPING SLEEVE, Ø2.5 X 10	1
28	AC-000127	PUSH BUTTON	1
29	PDW-000126	CONTACT PIECE, 9MM	1
30	AC-000125	SPRING, CONTACT	1
31	PDW-010121	MAGAZINE CATCH, 9MM	1
32	MAG-010003	9MM X 19 MAGAZINE	1
33	PDW-000651	M-LOC HANDGUARD, 9C	1
34	HW-000328	#8-32 X .375" FHCS	3
35	HW-000327	M6-1.0x30MM SHCS	1
36	AC-000656	INSERT, HANDGUARD CLEVIS	1
37	AC-000118	COCKING TUBE CAP	1
38	AC-000153	CLAMPING SLEEVE, Ø4 X 12	1

ITEM	PART NUMBER	DESCRIPTION	QTY.
39	AC-000152	FRONT SIGHT BLADE	1
40	AC-000120	CONTACT SPRING, CLOSING CAP	1
41	AC-000119	COMPRESSION BOLT, COCKING TUBE CAP	1
42	PDW-010151	FRONT SIGHT MOUNT	1
43	PDW-000146	CATCH BOLT, CHARGING LEVER	1
44	HW-000403	SPRING, Ø2.93 X 10.2	1
45	PDW-010144	CHARGING HANDLE	1
46	HW-000221	PIN, SPRING, 4MM x 12MM	1
47	PDW-000136	SUPPORT, CHARGING LEVER	1
48	PDW-009185	CASE DEFLECTOR	1
49	HW-000003	RIVET, DEFLECTOR	2
50	AC-000128	WASHER, OVAL, REAR SIGHT	1
51	HW-000606	LOCK WASHER, 5MM	1
52	HW-000502	M5 X 0.80 X 6 MACHINE SCREW, PAN HEAD	1
53	PDW-010109	REAR SIGHT, 9C	1
54	AC-000113	BALL, 3MM, REAR SIGHT	1
55	AC-000112	SPRING, REAR SIGHT	1
56	PDW-000115	WINDAGE SCREW	1
57	HW-000803	M5-0.80 LOCK NUT	1
58	PDW-000458	BUFFER BLOCK	1
59	PDW-000447	RECEIVER END CAP	1
60	AC-010751	SLING SWIVEL	1
61	HW-000329	M5-0.80 X 30 BUTTON SHCS	1
62	PDW-009145	END CAP, RECOIL SPRING ROD	2
63	PDW-009144	BUSHING, RECOIL ROD.	2
64	PDW-000411	COCKING TUBE ,SWAGE PIN	4
65	PDW-021200	CARRIER ASSY, 9MM	1
66	PDW-001444	ROD, RECOIL SPRING, 222MM	1
67	PDW-009202	FIRING PIN, 9MM	1
68	PDW-000203	SPRING, FIRING PIN, 9MM	1
69	PDW-001201	LOCKING PIECE, 90°	1
70	PDW-009204	LOCKING ROLLER	2
71	AC-000211	ROLLER RETAINER	1
72	PDW-009207	BOLT HEAD, 9MM	1
73	AC-000209	EXTRACTOR SPRING	1
74	PDW-009208	EXTRACTOR	1
75	AC-000212	CLAMPING SLEEVE, Ø2 x 7	1
76	PDW-001408	RECOIL SPRING, 426MM	1



PTR-9C

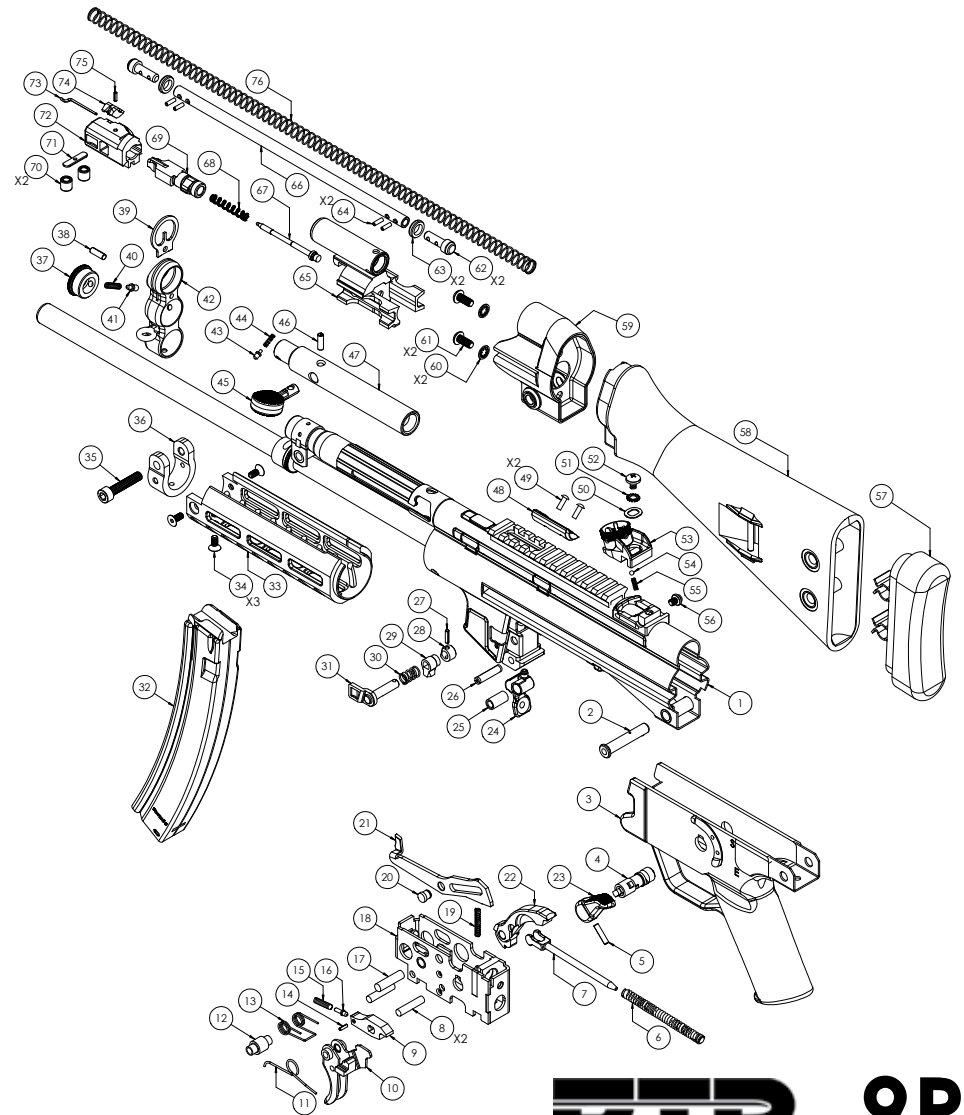
ITEM	PART NUMBER	DESCRIPTION	QTY.	ITEM	PART NUMBER	DESCRIPTION	QTY.
1	PDW-021182	RECEIVER, 9K	2	41	HW-000327	M6-1.0x30MM SHCS	1
2	PDW-012449	MULTI-PURPOSE END CAP, 9k	1	42	AC-000656	INSERT, HANDGUARD CLEVIS	1
3	PDW-000449	SLING SWIVEL, QD	1	43	AC-000119	COMPRESSION BOLT, COCKING TUBE CAP	1
4	92125A192	M4-0.7x12mm FHCS	2	44	AC-000120	CONTACT SPRING, CLOSING CAP	1
5	PDW-001453	PICATINNY RAIL, 6-LUG, END CAP	1	45	AC-000118	COCKING TUBE CAP	1
6	PDW-020320	PISTOL GRIP, 9K	1	46	AC-000153	CLAMPING SLEEVE, Ø4 X 12	1
7	AC-000315	Safety Shaft	1	47	AC-000152	FRONT SIGHT BLADE	1
8	PDW-012317	SAFETY LEVER	1	48	HW-000221	PIN, SPRING, 4MM x 12MM	1
9	HW-000205	PIN, COIL, 3MM x 15MM	1	49	PDW-001136	CHARGING LEVER SUPPORT, 100MM	1
10	AC-000362	HAMMER	1	50	PDW-010151	FRONT SIGHT MOUNT	1
11	PDW-000364	SPRING, HAMMER, 9MM	1	51	PDW-010144	LEVER, CHARGING HANDLE	1
12	AC-000363	PRESSURE FORK	1	52	PDW-009185	CASE DEFLECTOR	1
13	AC-011386	TRIGGER BOX	1	53	HW-000003	RIVET, DEFLECTOR	2
14	AC-000340	PIN, TRIGGER & BUSHING	2	54	PDW-000115	WINDAGE SCREW	1
15	AC-000356	SEAR	1	55	AC-000112	SPRING, REAR SIGHT	1
16	AC-001356	CLAMPING SLEEVE, Ø2 X 6.8	1	56	AC-000113	BALL, 3MM, REAR SIGHT	1
17	AC-010345	TRIGGER	1	57	PDW-010209	REAR SIGHT, 9K	1
18	AC-000341	SPRING, TRIGGER	1	58	AC-000128	WASHER, OVAL, REAR SIGHT	1
19	AC-000377	BUSHING, SEAR SPRING	1	59	HW-000606	LOCK WASHER, 5MM	1
20	PDW-000380	SPRING, ELBOW	1	60	HW-000502	M5 X 0.80 X 6 MACHINE SCREW, PAN HEAD	1
21	AC-000358	SPRING, SEAR	1	61	PDW-021200	CARRIER, 9K	1
22	AC-000357	TRIGGER BOLT	1	62	PDW-009202	FIRING PIN	1
23	AC-000361	PIN, HAMMER	1	63	PDW-000203	SPRING, FIRING PIN	1
24	AC-000337	SPRING, EJECTOR	1	64	PDW-003201	LOCKING PIECE, 110°	1
25	AC-000335	EJECTOR PIVOT	1	65	PDW-009204	LOCKING ROLLER	2
26	PDW-000339	EJECTOR LEVER, 9MM	1	66	AC-000211	ROLLER RETAINER	1
27	MAG-010003	9MM X 19 MAGAZINE	1	67	PDW-009207	BOLT HEAD, 9MM	1
28	PDW-010402	STOCK RETAINING PIN, 33MM	2	68	AC-000209	EXTRACTOR SPRING	1
29	AC-010131	MAG RELEASE LEVER	1	69	PDW-009208	EXTRACTOR	1
30	AC-002131	BUSHING, MAG RELEASE	1	70	AC-000212	CLAMPING SLEEVE, Ø2 x 7	1
31	HW-000227	PIN, SPRING COIL, 5MM x 22MM	1	71	PDW-000411	COCKING TUBE ,SWAGE PIN	4
32	AC-000124	CLAMPING SLEEVE, Ø2.5 X 10	1	72	PDW-009145	END CAP, RECOIL SPRING ROD	2
33	AC-000127	PUSH BUTTON	1	73	PDW-009144	BUSHING, RECOIL ROD.	2
34	PDW-000126	CONTACT PIECE, 9MM	1	74	PDW-000444	ROD, RECOIL SPRING, 1.63MM	1
35	AC-000125	SPRING, CONTACT	1	75	PDW-000408	RECOIL SPRING, 21.6MM	1
36	PDW-010121	MAG CATCH	1				
37	HW-000019	M-LOK NUT	2				
38	HW-000369	10-24 x 3/8" SHCS	2				
39	PDW-007663	FINGER GUARD	1				
40	HW-000328	#8-32 X .375" FLAT HEAD SHCS	3				



PTR-9KT

ITEM	PART NUMBER	DESCRIPTION	QTY.
1	PDW-031182	RECIEVER ASSY, 9R	1
2	AC-000402	STOCK RETAINING PIN	1
3	PDW-030320	PISTOL GRIP, 9R	1
4	AC-000315	SAFETY SHAFT	1
5	HW-000205	PIN, COIL, 3MM x 15MM	1
6	PDW-000364	SPRING, HAMMER, 9MM	1
7	AC-000363	PRESSURE FORK	1
8	AC-000340	PIN, TRIGGER & BUSHING	2
9	AC-000356	SEAR	1
10	AC-010345	TRIGGER ASSY	1
11	AC-000341	SPRING, TRIGGER	1
12	AC-000377	BUSHING, SEAR SPRING	1
13	PDW-000380	SPRING, ELBOW	1
14	AC-001356	CLAMPING SLEEVE, Ø2 X 6.8	1
15	AC-000358	SPRING, SEAR	1
16	AC-000357	TRIGGER BOLT	1
17	AC-000361	PIN, HAMMER	1
18	AC-011386	TRIGGER BOX	1
19	AC-000337	SPRING, EJECTOR	1
20	AC-000335	EJECTOR PIVOT	1
21	PDW-000339	EJECTOR LEVER, 9MM	1
22	AC-000362	HAMMER	1
23	PDW-012317	SAFETY SELECTOR	1
24	AC-010131	MAG RELEASE LEVER	1
25	AC-002131	BUSHING, MAG RELEASE	1
26	HW-000227	PIN, SPRING COIL, 5MM x 22MM	1
27	AC-000124	CLAMPING SLEEVE, Ø2.5 X 10	1
28	AC-000127	PUSH BUTTON	1
29	PDW-000126	CONTACT PIECE, 9MM	1
30	AC-000125	SPRING, CONTACT	1
31	PDW-010121	MAGAZINE CATCH, 9MM	1
32	MAG-010003	9MM X 19 MAGAZINE	1
33	PDW-000651	M-LOC HANDGUARD, 9R	1
34	HW-000328	#8-32 X .375" FHCS	3
35	HW-000327	M6-1.0x30MM SHCS	1
36	AC-000656	INSERT, HANDGUARD CLEVIS	1
37	AC-000118	COCKING TUBE CAP	1
38	AC-000153	CLAMPING SLEEVE, Ø4 X 12	1
39	AC-000152	FRONT SIGHT BLADE	1
40	AC-000120	CONTACT SPRING, CLOSING CAP	1

ITEM	PART NUMBER	DESCRIPTION	QTY.
41	AC-000119	COMPRESSION BOLT, COCKING TUBE CAP	1
42	PDW-010151	FRONT SIGHT MOUNT	1
43	PDW-000146	CATCH BOLT, CHARGING LEVER	1
44	HW-000403	SPRING, Ø2.93 X 10.2	1
45	PDW-010144	CHARGING HANDLE	1
46	HW-000221	PIN, SPRING, 4MM x 12MM	1
47	PDW-000136	SUPPORT, CHARGING LEVER	1
48	PDW-009185	CASE DEFLECTOR	1
49	HW-000003	RIVET, DEFLECTOR	2
50	AC-000128	WASHER, OVAL, REAR SIGHT	1
51	HW-000606	LOCK WASHER, 5MM	1
52	HW-000502	M5 X 0.80 X 6 MACHINE SCREW, PAN HEAD	1
53	PDW-010109	REAR SIGHT, 9R	1
54	AC-000113	BALL, 3MM, REAR SIGHT	1
55	AC-000112	SPRING, REAR SIGHT	1
56	PDW-000115	WINDAGE SCREW	1
57	AC-010478	BUTT PAD	1
58	AC-010481	BUTT STOCK	1
59	AC-010449	BUTT CAP, STEEL	1
60	HW-000607	M5 INT-TOOTH LOCK WASHER	2
61	HW-000379	M5-0.8 x 12MM BHCS	2
62	PDW-009145	END CAP, RECOIL SPRING ROD	2
63	PDW-009144	BUSHING, RECOIL ROD.	2
64	PDW-000411	COCKING TUBE .SWAGE PIN	4
65	PDW-021200	CARRIER ASSY, 9MM	1
66	PDW-001444	ROD, RECOIL SPRING, 222MM	1
67	PDW-009202	FIRING PIN, 9MM	1
68	PDW-000203	SPRING, FIRING PIN, 9MM	1
69	PDW-001201	LOCKING PIECE, 90°	1
70	PDW-009204	LOCKING ROLLER	2
71	AC-000211	ROLLER RETAINER	1
72	PDW-009207	BOLT HEAD, 9MM	1
73	AC-000209	EXTRACTOR SPRING	1
74	PDW-009208	EXTRACTOR	1
75	AC-000212	CLAMPING SLEEVE, Ø2 x 7	1
76	PDW-001408	RECOIL SPRING, 426MM	1



PTR-9R

